

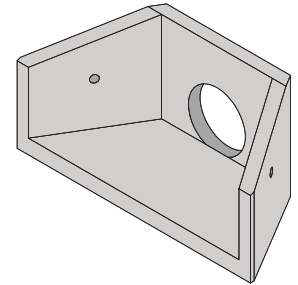
# ENDWALLS & WINGWALLS

Precast concrete wing walls and driveable endwalls are available from SVC to suit 225, 300 or 375mm dia pipes. Driveable endwalls are manufactured in compliance with **VicRoads SD 1991A**.

## WINGWALLS

Reinforced concrete wing walls (also referred to as headwalls) are installed at a stormwater inlet or outlet, acting as a retaining wall and preventing blockages of the water flow from erosion.

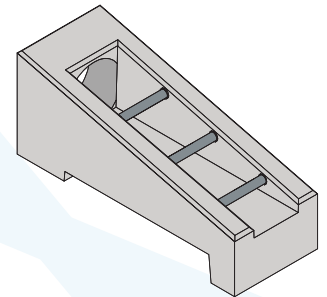
PRODUCT CODE	PRODUCT DESCRIPTION	APPLICABLE VICROADS DRAWINGS
18.044	ENDWALL WINGWALL 225DIA	SD 1921 equivalent
18.045	ENDWALL WINGWALL 300DIA	SD 1921 equivalent
18.046	ENDWALL WINGWALL 375DIA	SD 1921 equivalent



## VICROADS DRIVEABLE ENDWALLS

Driveable endwalls are designed for use in areas where vehicular collision may occur. They are manufactured in compliance with the specifications in VicRoads SD 1991 A (Type 1).

PRODUCT CODE	PRODUCT DESCRIPTION	APPLICABLE VICROADS DRAWINGS
18.047	DRIVEABLE ENDWALL 225DIA	SD 1991A (TYPE 1)
18.048	DRIVEABLE ENDWALL 300DIA	SD 1991A (TYPE 1)
18.049	DRIVEABLE ENDWALL 375DIA	SD 1991A (TYPE 1)

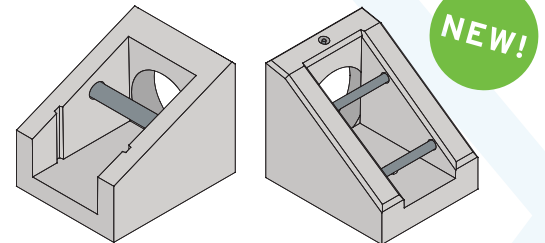


## SHORT DRIVEABLE ENDWALLS

Short driveable endwalls are specifically designed for use in rural driveway crossings, where large VicRoads driveable endwalls are unsuitable.

PRODUCT CODE	PRODUCT DESCRIPTION
18.039	SHORT DRIVEABLE ENDWALL 300MM SINGLE BAR *
18.043	SHORT DRIVEABLE ENDWALL 375MM 2-BAR

\* A compatible debris screen is available as an accessory product that can be slotted into the front of the single-bar endwall.



Wing walls in SVC yard.



Driveable endwalls installed alongside a road in Upper Plenty.



Single-bar endwall with debris screen attachment.