

VICROADS

# PRODUCTS FOR ROADWORKS

Pits, covers, subsurface drainage & endwalls



SVC Civil stocks a wide range of drainage, kerbing and subsurface products as specified by VicRoads.

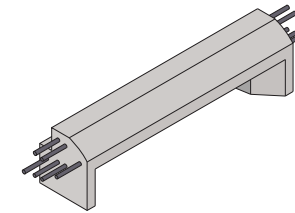
Products include kerb lintels, access covers, side entry and junction pits, batter outlets, custom pits, wingwalls and driveable endwalls.

1300 287 782 - [svc.com.au](http://svc.com.au)

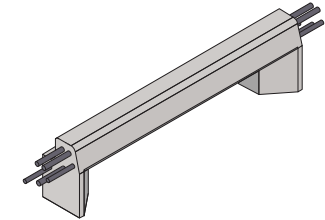
# Pits, covers & subsurface drainage

## LINTELS

PRODUCT CODE	PRODUCT DESCRIPTION	APPLICABLE VICROADS DRAWING/S
15.320	KERB LINTEL ROLLOVER VICROADS 1300 LEGS	SD 1061 / SD 1271 / SD 1281 / SD 1301 / SD 1321
15.321	KERB LINTEL BARRIER VICROADS 1300 LEGS	SD 1061 / SD 1272 / SD 1282 / SD 1301 / SD 1322
15.555	KERB LINTEL ROLLOVER VICROADS 1800 LEGS	SD 1061 / SD 1311
15.556	KERB LINTEL BARRIER VICROADS 1800 LEGS	N/A



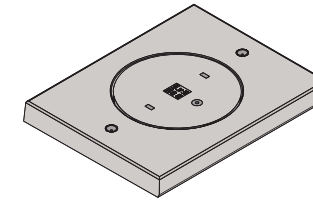
Rollover (SM-type) kerb lintel



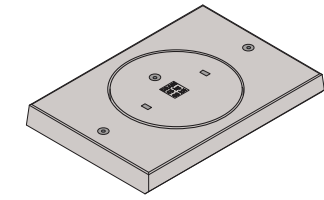
Barrier (B-type) kerb lintel

## CONCRETE PIT COVERS

PRODUCT CODE	PRODUCT DESCRIPTION	APPLICABLE VICROADS DRAWING/S
14.221	SE FRAME VICROADS 1300x900 ROUND	SD 1051 / SD 1301
14.223	SE FRAME VICROADS 1800x900 ROUND	SD 1051 / SD 1311
16.202	JP FRAME VICROADS 1300x1050 ROUND	SD 1051 / SD 1121
16.204	JP FRAME VICROADS 1800x1050 ROUND	SD 1051
14.376	SE INSERT VICROADS 710DIA	SD 1051 / SD 1121 / SD 1301 / SD 1311



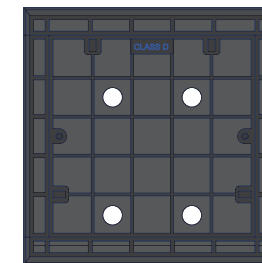
1300x1050 JP frame and insert



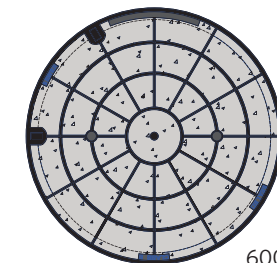
1300x900 SE frame and insert

## CAST IRON PIT COVERS

PRODUCT CODE	PRODUCT DESCRIPTION	APPLICABLE VICROADS DRAWING/S
26.AC77D	ACCESS COVER C-IRON 750x750 CLASS D	SD 1051 / SD 1131
26.AC107D	ACCESS COVER C-IRON 1000x750 CLASS D	SD 1131 (modified)
26.AC106DP	ACCESS COVER C-IRON 1050x650 GALV EDGE CLASS D	SD 1271 / SD 1272 / SD 1281 / SD 1282
26.AC60D	ACCESS COVER C-IRON 600DIA CLASS D	SD 1051



750x750 cast iron cover

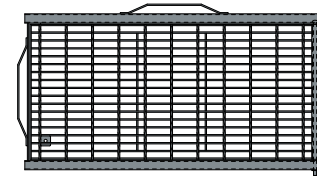


600dia cast iron insert

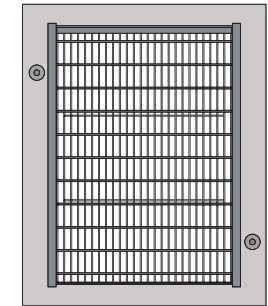
# Pits, covers & subsurface drainage

## GRATES

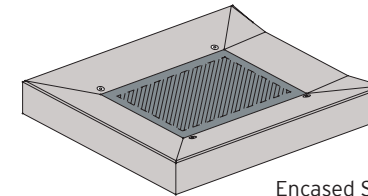
PRODUCT CODE	PRODUCT DESCRIPTION	APPLICABLE VICROADS DRAWING/S
21.881	GRATE ENCASED VICROADS SD1411 1000x750 CLASS D	SD 1411
25.882	GRATE KERB 1000x522 VICROADS SD1322 CLASS D	SD 1321 / SD 1322
25.883	GRATE HINGED 1000x750 VICROADS SD1431 CLASS D	SD 1411 / SD 1431
21.883	GRATE ENCASED 1000x750 VICROADS SD1431 CLASS D	SD 1431
25.884	GRATE 1000x750 VICROADS SD1441 CLASS E	SD 1441
21.884	GRATE ENCASED 1000x750 VICROADS SD1441 CLASS E	SD 1441
25.877	GRATE V 900x375 SM2 FORGEBAR CLASS D	SM2 custom kerb profiles
25.WSG1010D	GRATE FLAT 1000x1000 FORGEBAR CLASS D	SD 1411 / SD 1431



Kerb grate 1000x522



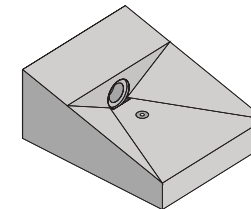
Encased grate 1000x750



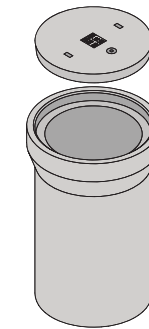
Encased SD1411 grate

## SUBSURFACE ACCESSORIES

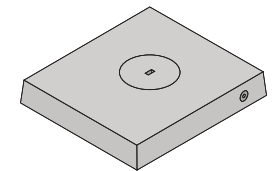
PRODUCT CODE	PRODUCT DESCRIPTION	APPLICABLE VICROADS DRAWING/S
18.051	VICROADS SINGLE BATTER OUTLET	SD 1631
18.054	VICROADS DOUBLE BATTER OUTLET	SD 1641
18.053	VICROADS S1/S2 SUBSURFACE PIT BODY	SD 1611
14.376	VICROADS SEPC INSERT ROUND (FOR S1 PIT)	SD 1611
26.AC60D	CAST IRON COVER 600DIA CLASS D (FOR S2 PIT)	SD 1611
19.221	FLUSHOUT RISER VICROADS COVER SET	SD 1631
19.225	DOUBLE FLUSHOUT RISER VICROADS COVER SET	SD 1641
19.230	FLUSHOUT RISER VICROADS COVER SET WITH APRON	SD 1631



Batter outlet



S1 subsurface pit & cover

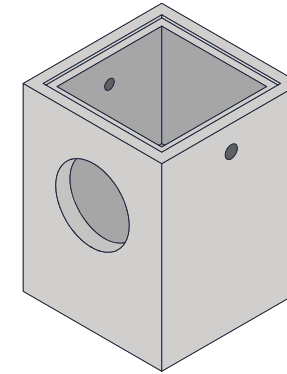


Flushout riser cover set with apron

## CUSTOM PRECAST PITS

PRODUCT CODE	PRODUCT DESCRIPTION	APPLICABLE VICROADS DRAWING/S
N/A	CUSTOM DEPTH PRECAST CONCRETE PIT - 750x750	SD 1011
N/A	CUSTOM DEPTH PRECAST CONCRETE PIT - 1000x750	SD 1011
N/A	CUSTOM DEPTH PRECAST CONCRETE PIT - 1000x1000	SD 1011

Larger custom sizes are also available to order.

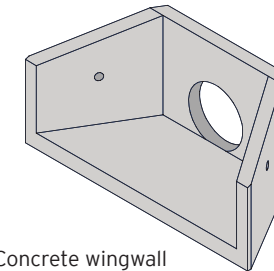


SVC can manufacture custom precast pits with bespoke depths and knockouts or holes positioned where required.

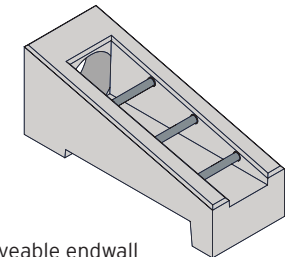
## Endwalls

### WINGWALLS & DRIVEABLE ENDWALLS

PRODUCT CODE	PRODUCT DESCRIPTION	APPLICABLE VICROADS DRAWING/S
18.044	ENDWALL WINGWALL 225DIA	SD 1921
18.045	ENDWALL WINGWALL 300DIA	SD 1921
18.046	ENDWALL WINGWALL 375DIA	SD 1921
18.047	ENDWALL DRIVEABLE 225DIA	SD 1991
18.048	ENDWALL DRIVEABLE 300DIA	SD 1991
18.049	ENDWALL DRIVEABLE 375DIA	SD 1991



Concrete wingwall



Driveable endwall

### List of VicRoads Standard Drawings referred to in this brochure:

SD 1011 - Unhaunched Pits

SD 1051 - Pit Covers

SD 1061 - Lintels

SD 1121 - Junction Pit - Concrete Cover

SD 1131 - Junction Pit - Cast Iron Cover

SD 1271 - Side Entry Pit - SM Type Kerb - Cast Iron Cover - 1.0M Inlet

SD 1272 - Side Entry Pit - B Type Kerb - Cast Iron Cover - 1.0M Inlet

SD 1301 - Side Entry Pit - Concrete Cover - 1.0M Inlet

SD 1311 - Side Entry Pit - Concrete Cover - 1.5M Inlet

SD 1321 - Grated Side Entry Pit - SM Type Kerb - 1.0M Inlet

SD 1322 - Grated Side Entry Pit - B Type Kerb - 1.0M Inlet SD 1411 - Grated Pit - Depressed Steel Grate

SD 1431 - Grated Pit - Flush Steel Grate

SD 1611 - Subsurface Drain - Pits

SD 1631 - Pavement Drain - Terminals

SD 1641 - Pavement Drain - Alternative Arrangements

SD 1921 - Reinforced Concrete Wingwall - Types 1, 2 & 3 Pipe Culverts 300 to 525 Dia

SD 1991 - Driveable Culvert Endwalls Type 1 - Pipe Culverts up to 600 Dia Box Culverts up to 600 wide