

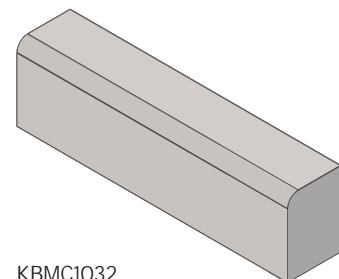
# KERB UNITS

Precast concrete kerb units are used in traffic management, road maintenance and construction.

## MCC KERBS



The product listed here is the standard Melbourne City Council kerbing unit. Our comprehensive range of MCC kerbs includes many different colours and finishes as well as matching fittings.



PRODUCT CODE	PRODUCT DESCRIPTION	WEIGHT
KBMC1032	KERB MCC 1000x300x200	165 kg

KBMC1032

