

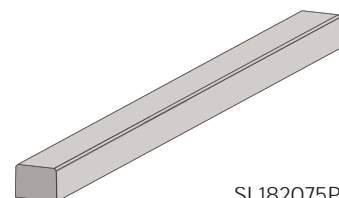
# SLEEPERS

Structural precast concrete sleepers are used in a range of applications for earth retention and bordering.

## PLAIN OFF MOULD SLEEPERS

The standard plain grey off-mould finish creates a smooth sleeper surface.

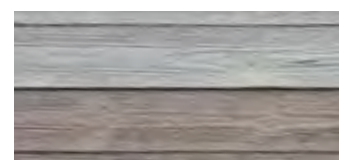
PRODUCT CODE	PRODUCT DESCRIPTION	WEIGHT
SL182075P	SLEEPER 1800x200x75 PLAIN OFF MOULD	68 kg
SL202010P	SLEEPER 2000x200x100 PLAIN OFF MOULD	100 kg
SL242010P	SLEEPER 2400x200x100 PLAIN OFF MOULD	120 kg
SL302015P	SLEEPER 3000x200x150 PLAIN OFF MOULD	225 kg



## TIMBER PATTERNED SLEEPERS

The timber pattern finish combines the visual aesthetic of a timber product with the strength and durability of concrete.

PRODUCT CODE	PRODUCT DESCRIPTION	WEIGHT
SL202010T	SLEEPER 2000x200x100 TIMBER PATTERN	100 kg
SL242010T	SLEEPER 2400x200x100 TIMBER PATTERN	120 kg

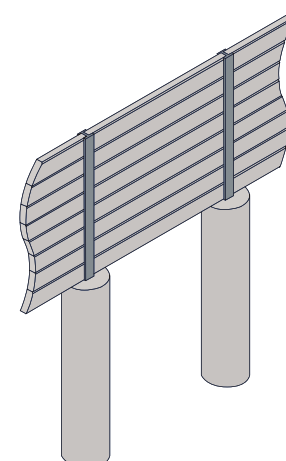


## TIERED SLEEPER PANELS

Sleepers are available in tiered panels of three or more sleepers high, providing ease and convenience onsite. Installation time is reduced, as a sleeper panel can be installed in roughly the same time as an individual sleeper.

MADE TO ORDER

Tiered sleeper panels are manufactured to order. Enquire SVC.



## SLEEPER POSTS

An extensive range of heavy duty Galintel® steel sleeper and retaining wall posts are available. Sleeper posts are hot-dip galvanised in compliance with AS/NZS4680, to ensure high performance and durability.

For more information, please refer to the Galintel® Retaining Wall Post product catalogue or contact SVC.

